

## 2010 Model Year Vin Changes

### Who does this affect?

All manufacturers are affected.

### When does this go into affect?

Effective immediately: Any manufacture that is currently producing a 2010 Model Year.

Effective after 4/30/2009: Any manufacture producing any Model Year.

### What changes have to be made?

Trailer manufacturers will be required to include the name of the Make, or abbreviation, in any one of the vin positions 4-8. In most cases "Make" is the same as the Company Name.

*Example: Power Trailer Company & Plastics can be abbreviated as PTCP.*

An updated listing of all vin codes will need to be submitted to NHTSA.

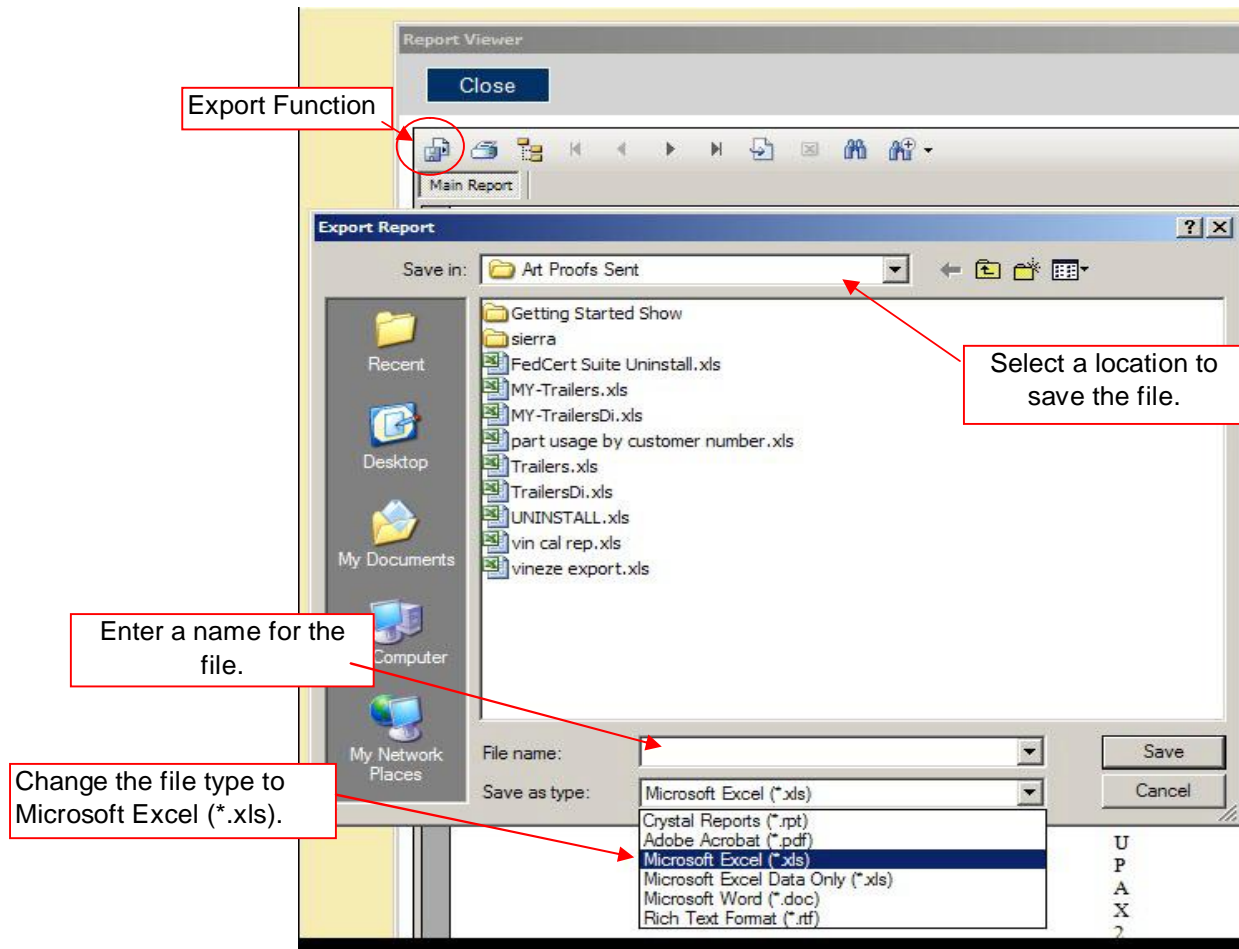
### How to accommodate these changes in the FedCert Suite Software:

1. Under the Administration Menu, select Vin Code Setup.
2. Select Type Of Trailer.
3. For each Type Of Trailer produced, you will need to add the Make or abbreviation at the end of the Code Name.
4. Click in the Code Name field and move the cursor to the end of the Type of Trailer and enter the name or abbreviation.  
*In the picture at the right, "PTCP" has been added at the end of the Code Name "CARGO".*
5. Make the changes to all Code Names for the Type Of Trailers.
6. Be sure to save the changes made.

Attribute Name	Number of Positions	VIN Position
type of trailer	1	4
body type	1	5
length	2	6 - 7
rules configuration	1	8

Code	Code Name
C	CARGO-PTCP
G	GOOSENECK
D	DUMP
L	LANDSCAPE

7. Access the Vin Calculation Report through the Administrative Menu.
8. Once the report has generated, you will need to export the report to make modification.
9. Select the Export function and change the Save As Type to Microsoft Excel (\*.xls), name the file and save.
10. Enter a File Name and choose a location in which to save the file.



11. Open the Excel file you just created to make the modification.
12. Click on "Type Of Trailer" in the Vin Calculation Report.
13. At the end of the wording add "-Make" so it will appear as "Type Of Trailer-Make".
14. If all of the text does not show, you may need to adjust the row height clicking on the row number and dragging it to the desired height.
15. The modified report is ready to be submitted to the government.

**Sample of the Vin Calculation Report:**

2	POWER TRAILER COMPANY AND PLASTIC			
3	23456 SWAN DR			
4				
5	HUTVILLE			
6	AL			
7	46540			
8				
9	Vehicle Identification Number (VIN) decoding information			
	In accordance with paragraph 565.7-c of 49 CFR Part 565, <i>Vehicle Identification Number</i> .			
10				
12	<u>VIN</u>	<u>DESCRIPTION:</u>	<u>CODE:</u>	<u>CODE NAME:</u>
13				
14	1 through 3	WMI	HZZ	
17		Type of Trailer-	C	CARGO-PTCP
19		Make	G	GOOSENECK-PTCP
20			D	DUMP-PTCP
21			L	LANDSCAPE-PTCP

Row height may need to be adjusted to accommodate text.

Select "Type of Trailer" add "-Make" at the end of the copy

The "-PTCP" for the company abbreviation appears here.

**Vin Calculation Report should be addressed to:**  
 National Highway Traffic Safety Administration (NSA-32)  
 400 Seventh Street, SW  
 Washington, DC 20590  
 Attn: Vin Coordinator  
 Subject: VIN Decoding Information for "You Company Name"



800-225-6879  
 3914 Lexington Park Dr., Elkhart, IN 46514  
 www.dec-o-art.com \* www.fedcertsuite.com